

RAPID[®]Chromogenic Media

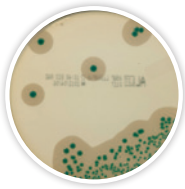
Culture Media for the Detection and Enumeration of
Food and Environmental Pathogens and Quality Indicators



RAPID'Chromogenic Media Technology and Applications

RAPID'Chromogenic Media are a complete range of highly selective chromogenic agars designed to detect and enumerate various microorganisms in food and environmental samples. They offer economical, labor-saving protocols and provide a shorter time to results than classical methods. The combination of the selected chromogenic mixture with high-quality raw material allows for high levels of contrast, selectivity, and sensitivity — making these plates easy to read.

AL (Agar *Listeria* according to Ottaviani and Agosti)



Applications

- Protocols for detection and enumeration
- Approved for ISO 11290-1 and 11290-2 protocols
- Recommended in FDA BAM Chapter 10
- Approved for MFLP-74 protocol
- Confirmation of iQ-Check™ *Listeria monocytogenes* and *Listeria* spp. II real-time PCR results



Enzymatic Activity	<i>L. monocytogenes</i>	<i>Listeria</i> spp.	Non- <i>Listeria</i>
PI-PLC detection	+	–	–
β-D-glucosidase	+	+	–

RAPID'*B.cereus*



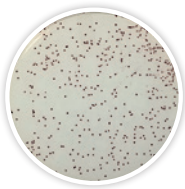
Applications

- Enumeration of the *Bacillus cereus* group
- Clear enumeration of the sensitive *B. cytotoxicus*
- No confirmation required
- Inhibition of background flora on raw matrices



Enzymatic Activity	<i>B. cereus</i> (e.g., <i>B. cereus sensu stricto</i>)	<i>B. cytotoxicus</i>	<i>B. cereus</i> (e.g., <i>B. mycoides</i>)	Atypical <i>B. cereus</i> (e.g., <i>B. thuringiensis</i>)
Chromogenic substrate	+	+	+	+
Phospholipase	+	+	+	–

RAPID'*Campylobacter*



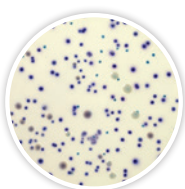
Applications

- Protocols for detection and enumeration
- Approved as second media in ISO 10272-1 protocol
- Inhibition of competing organisms
- Validation with Hunt broth (see USDA MLG)



Enzymatic Activity	Thermophilic <i>Campylobacter</i> spp.
Chromogenic substrate	+

RAPID'*E.coli* 2



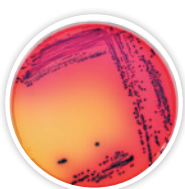
Applications

- Enumeration of *Escherichia coli* and other coliforms
- Differentiation by color, not gas formation
- Can be incorporated into a hygiene monitoring program
- No confirmation required



Enzymatic Activity	<i>E. coli</i>	Other Coliforms	Non-Coliforms
Glucuronidase	+	–	–
Galactosidase	+	+	–

RAPID'*E.coli* O157:H7



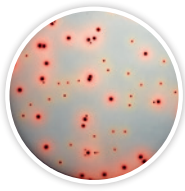
Applications

- Detection of *E. coli* O157:H7
- Approved as second media in ISO 16654 protocol
- Confirmation of iQ-Check *E. coli* O157:H7 real-time PCR results
- Detection of rare sorbitol-positive strains



Enzymatic Activity	<i>E. coli</i> O157:H7	Other <i>E. coli</i>	Other Bacteria
Glucuronidase	–	+	–
Galactosidase	+	+	–
Sorbitol	–	+	+/-

RAPID'Enterobacteriaceae



Applications

- Enumeration of *Enterobacteriaceae*
- Surface inoculation or pour-plate method
- Can be incorporated into a hygiene monitoring program
- No confirmation required



Enzymatic Activity	<i>Enterobacteriaceae</i>	Non- <i>Enterobacteriaceae</i>
Glucose fermentation	+	-

RAPID'Listeria spp.



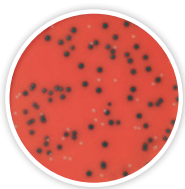
Applications

- Detection of *Listeria* spp.
- Confirmation of iQ-Check *Listeria* spp. real-time PCR results
- Can be part of an environmental monitoring program



Enzymatic Activity	<i>Listeria</i> spp.
β-D-glucosidase	+

RAPID'L.mono



Applications

- Enumeration and detection of *L. monocytogenes* and detection of *Listeria* spp.
- Approved as second media in ISO 11290-1 protocol
- Recommended in FDA BAM Chapter 10
- Approved for MFHPB-30 and MFLP-74 protocols
- Confirmation of iQ-Check *Listeria monocytogenes* II real-time PCR results



Enzymatic Activity	<i>L. monocytogenes</i>	<i>L. ivanovii</i>	<i>L. innocua</i>	<i>L. welshimeri</i>
PI-PLC detection	+	+	-	-
Xylose fermentation	-	+	-	+

RAPID'Sakazakii



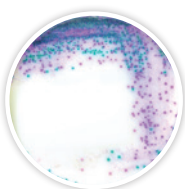
Applications

- Detection of *Cronobacter* spp.
- Confirmation of iQ-Check *Cronobacter* spp. real-time PCR results
- Harmonized enrichment protocol with RAPID'*Salmonella* for select matrices



Enzymatic Activity	<i>Cronobacter</i> spp.	Other <i>Enterobacteriaceae</i>
α-D-glucosidase	+	-

RAPID'Salmonella



Applications

- Detection of *Salmonella* spp.
- Single 24 hr enrichment protocol without subculturing
- Approved as second media in ISO 6579-1 protocol
- Confirmation of iQ-Check *Salmonella* II real-time PCR results
- Harmonized enrichment protocol with RAPID'*Salmonella* for select matrices



Enzymatic Activity	<i>Salmonella</i> spp.	Other <i>Enterobacteriaceae</i>	<i>Proteus</i> spp.
C8 esterase	+	+	-
β-D-glucosidase	-	+	-

RAPID'Staph



Applications

- Enumeration of coagulase-positive staphylococci
- Final result in 24 hr
- Fast latex confirmation



Enzymatic Activity	<i>Staphylococcus</i> Coagulase-Positive	<i>Staphylococcus</i> Coagulase-Negative
Potassium tellurite reduction	+	+
Egg yolk proteolysis	+	-

Validations

	NF Validation by AFNOR Certification	 AOAC	 NordVal	 Health Canada		NF Validation by AFNOR Certification	 AOAC	 NordVal	 Health Canada
Chromogenic Media					Chromogenic Media				
AL	•				RAPID' <i>Listeria</i> spp.	•	•		
RAPID' <i>B.cereus</i>	•				RAPID' <i>L.mono</i>	•	•	•	•
RAPID' <i>Campylobacter</i>	•	•			RAPID' <i>Sakazakii</i>	•			
RAPID' <i>E.coli</i> 2	•	•	•	•	RAPID' <i>Salmonella</i>	•	•	•	
RAPID' <i>E.coli</i> O157:H7	•	•			RAPID' <i>Staph</i>			•	
RAPID' <i>Enterobacteriaceae</i>	•								

Ordering Information

Catalog #	Description	Catalog #	Description	Catalog #	Description	
Buffered Peptone Water Plus Broth			RAPID'<i>Campylobacter</i> Agar			
3554179	Ready to use, 225 ml x 6 bottles	3564295	Dehydrated base, 500 g	3563971	Ready to use, 90 mm x 20 plates	
3555795	Ready to use, 3 L x 4 bags	3564296	Supplement, 1 box, 10 vials	3564976	Dehydrated base, 500 g	
3555790	Ready to use, 5 L x 2 bags	3564297	<i>Campylobacter</i> Confirm Latex Kit, 50 tests (confirmation)	12013322	PIF Supplement, 2 g	
3564684	Dehydrated base, 500 g	12012036	Ready to use, 90 mm x 20 plates	RAPID'<i>Salmonella</i> Agar		
Buffered Peptone Water Standard Broth			RAPID'<i>Salmonella</i> Agar			
12013260	Ready to use, 5 L x 2 bags	3564748	Dehydrated base, 100 g	3563961	Ready to use, 90 mm x 20 plates	
12013259	Dehydrated base, 500 g	RAPID'<i>E.coli</i> 2 Agar			3563963	Ready to use, 90 mm x 120 plates
12013258	Dehydrated base, 5 g	3555299	Ready to use, 100 ml x 6 bottles	3564705	Dehydrated base, 500 g	
Fraser 1/2 Plus Broth			3555297	Ready to use, 200 ml x 6 bottles	3564709	Enrichment supplement capsules, 10x, 100 capsules
3564604	Dehydrated base, 500 g	3564024	Dehydrated base, 500 g	RAPID'<i>Salmonella</i> Agar		
3564616	Supplement, 1 box, 10 vials	RAPID'<i>E.coli</i> O157:H7 Agar			3564710	Enrichment supplement capsules, 100 capsules
3555797	Ready to use, 225 ml x 6 bottles	3564748	Dehydrated base, 100 g	3564712	Enrichment supplement, 100 analyses	
3555794	Ready to use, 3 L x 4 bags	RAPID'<i>Enterobacteriaceae</i> Agar			3566710	<i>Salmonella</i> Latex Test, 75 tests (confirmation)
Half Fraser Standard Broth			3554012	Ready to use, 200 ml x 6 bottles	3566711	<i>Salmonella</i> Confirm Latex Kit, 50 tests (confirmation)
12018707	Ready to use, 5 L x 2 bags	3564004	Dehydrated base, 500 g	12013322	PIF Supplement, 2 g	
12018706	Dehydrated base, 500 g	RAPID'<i>Listeria</i> spp. Agar			RAPID'<i>Staph</i> Agar	
12018705	Dehydrated base, 5 g	3564744	Dehydrated base, 500 g	3563960	Ready to use, 90 mm x 20 plates	
AL			3564745	Supplement 1, 1 box, 10 vials	3564704	Dehydrated base, 500 g
3563965	Ready to use, 90 mm x 120 plates	3564746	Supplement 2, 1 box, 10 vials	3566356	Pastorex Staph Plus Latex Agglutination Test, 50 tests	
3563695	Ready to use, 90 mm x 20 plates	RAPID'<i>L.mono</i> Agar			3566353	Pastorex Staph Plus Latex Agglutination Test, 5 x 50 tests
3564043	Dehydrated base, 500 g	3563964	Ready to use, 90 mm x 120 plates			
3555200	Ready to use, 6 x quantity for 250 ml	3563694	Ready to use, 90 mm x 20 plates			
3564041	Supplement 1, 1 box, 10 vials	3555294	Ready to use, 190 ml + supplements			
3564042	Supplement 2, 1 box, 10 vials	3564293	Dehydrated base, 500 g			
RAPID'<i>B.cereus</i> Agar			3564294	Supplement 1, 1 box, 10 vials		
12007304	Ready to use, 90 mm x 20 plates	3564746	Supplement 2, 1 box, 10 vials			
12007305	Dehydrated base, 500 g	3553669	Rhamnose Test, 1 ml x 28 tubes			
12007306	Supplement 1, 1 box, 10 vials					
12007307	Supplement 2, 1 box, 10 vials					

For more information and to see how our products can be incorporated into food testing workflows, visit our website:

RAPID'Chromogenic Media — [bio-rad.com/RapidMedia](https://www.bio-rad.com/RapidMedia)

iQ-Check Real-Time PCR Kits — [bio-rad.com/iQCheck](https://www.bio-rad.com/iQCheck)

BIO-RAD is a trademark of Bio-Rad Laboratories, Inc. IQ-CHECK is a trademark of Bio-Rad Europe GmbH in certain jurisdictions. All trademarks used herein are the property of their respective owner. © 2024 Bio-Rad Laboratories, Inc.



**Bio-Rad
Laboratories, Inc.**

Life Science
Group

Website [bio-rad.com](https://www.bio-rad.com) USA 1 800 424 6723 Australia 61 2 9914 2800 Austria 00 800 00 24 67 23 Belgium 00 800 00 24 67 23 Brazil 4003 0399
Canada 1 905 364 3435 China 86 21 6169 8500 Czech Republic 00 800 00 24 67 23 Denmark 00 800 00 24 67 23 Finland 00 800 00 24 67 23
France 00 800 00 24 67 23 Germany 00 800 00 24 67 23 Hong Kong 852 2789 3300 Hungary 00 800 00 24 67 23 India 91 124 4029300 Israel 0 3 9636050
Italy 00 800 00 24 67 23 Japan 81 3 6361 7000 Korea 82 080 007 7373 Luxembourg 00 800 00 24 67 23 Mexico 52 555 488 7670
The Netherlands 00 800 00 24 67 23 New Zealand 64 9 415 2280 Norway 00 800 00 24 67 23 Poland 00 800 00 24 67 23 Portugal 00 800 00 24 67 23
Russian Federation 00 800 00 24 67 23 Singapore 65 6415 3188 South Africa 00 800 00 24 67 23 Spain 00 800 00 24 67 23 Sweden 00 800 00 24 67 23
Switzerland 00 800 00 24 67 23 Taiwan 886 2 2578 7189 Thailand 66 2 651 8311 United Arab Emirates 36 1 459 6150 United Kingdom 00 800 00 24 67 23

