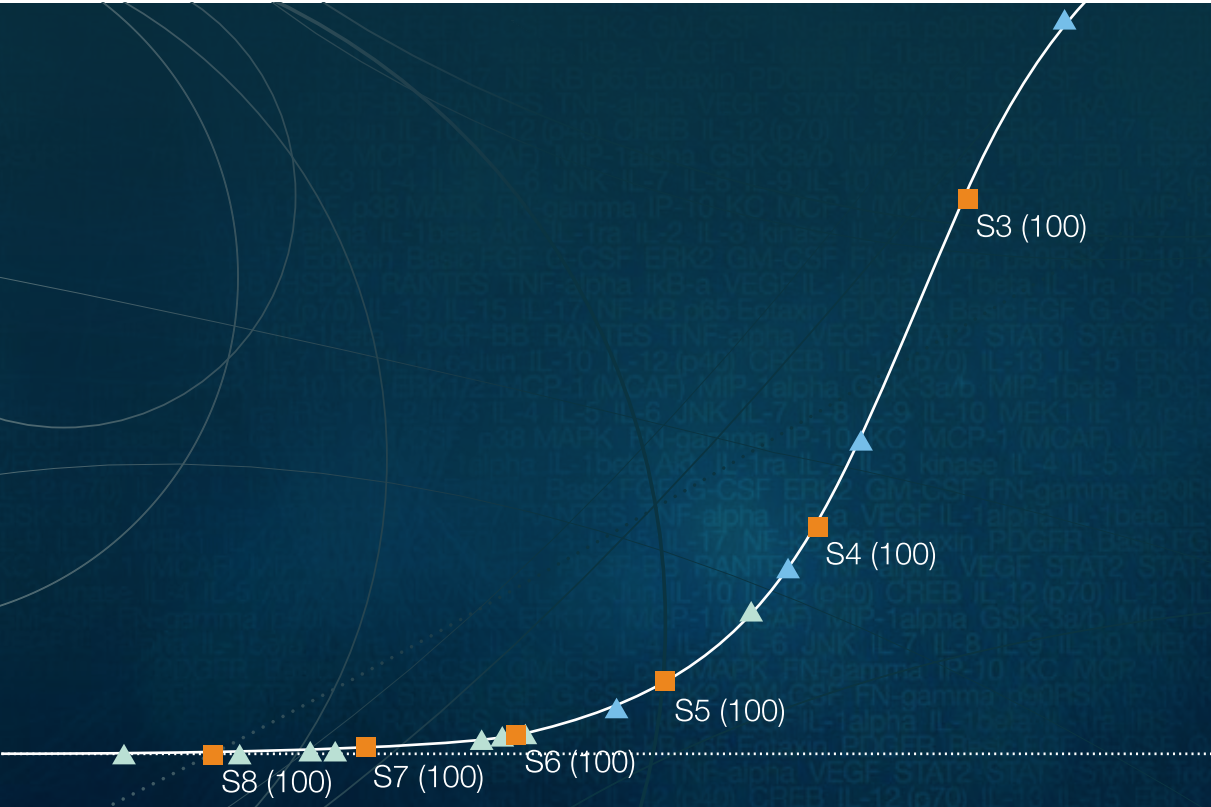


## Multiplex Suspension Arrays



Bio-Plex Manager™ Software

Effortless Productivity

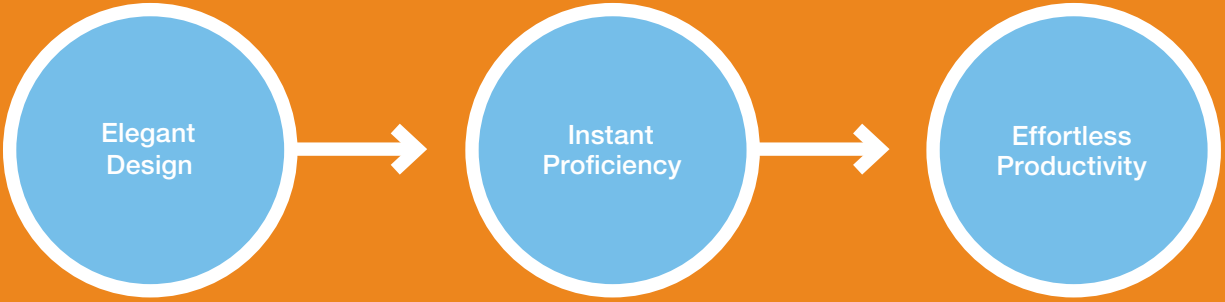


**Bio-Plex Manager software empowers even the most inexperienced user to simply and quickly achieve proficiency and deliver results.**

---

Bio-Plex Manager software has been the standard for multiplex analysis since its introduction. With Bio-Plex Manager software version 6.0 we continue the tradition of providing a simple and easy-to-use software. We've made improvements to all aspects of our software from acquisition to analysis. And of course you can be confident that we provide the most trusted analysis tools and algorithms available.

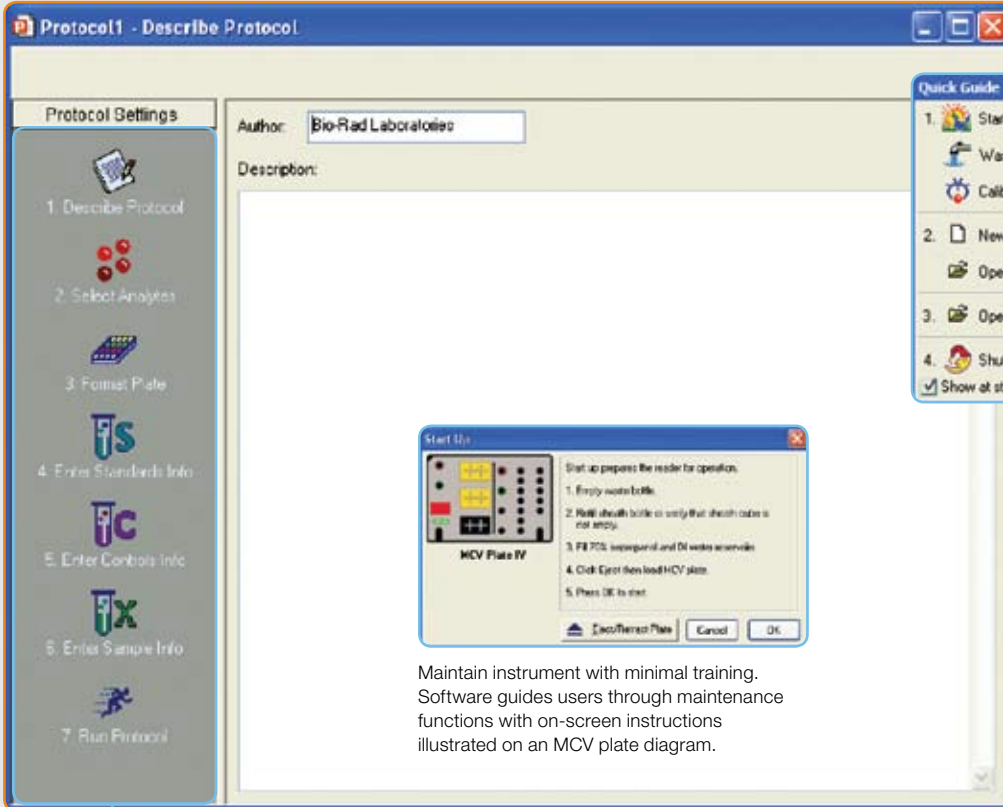
Over 50% of multiplex assays are run using Bio-Plex Manager software. Try Bio-Plex Manager software version 6.0 and find out why.



- Accelerate your research
- Be an instant expert
- Experience incomparable flexibility

**Why struggle with awkward imitations of Bio-Plex Manager software? Use the proven choice for effortless multiplex experiments.**

Bio-Rad has more experience in software design and multiplex technology than any other multiplex provider. The result is a straightforward and elegant design that guides you effortlessly from experiment setup through analysis of your results.



Maintain instrument with minimal training. Software guides users through maintenance functions with on-screen instructions illustrated on an MCV plate diagram.

Learn as you go. Quick guide provides easy access to commonly required procedures.

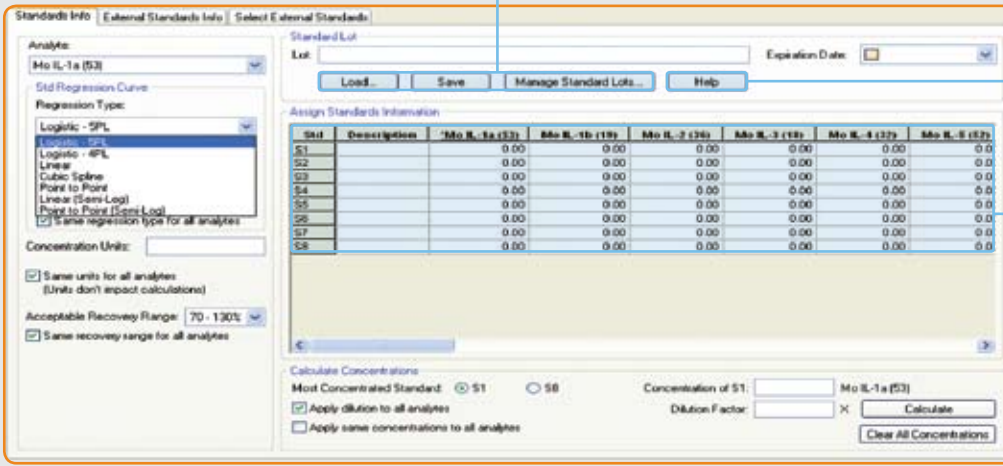
**Other productivity enhancers include:**

1. Run automated pre- and post-run maintenance procedures using the Bio-Plex® reservoir.
2. Run multiple assays in one protocol.
3. Automatically assign data collection parameters by choosing assay type.
4. Use simple and flexible export to Excel files.
5. On-screen guides provide helpful application-specific information.

Set up protocols quickly. Simply follow the on-screen guide starting with step 1 and finishing with step 7. (Several steps are optional.)

Save time by automating common tasks. Lot management allows you to import and save lot information to ensure consistent entry.

**NEW!**



Get help easily. Thoughtfully placed Help buttons take you to relevant topics within the Help file.

**NEW!**

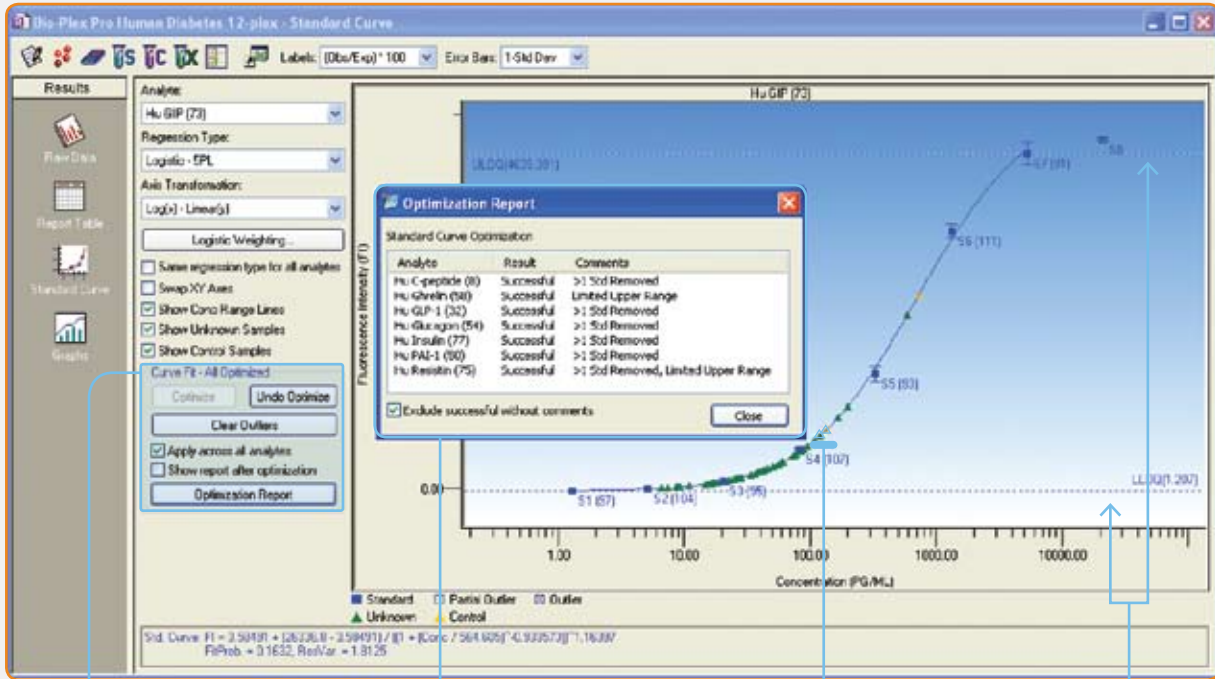
Enter and review information effortlessly with features like the new standards entry interface.

**NEW!**



**Bio-Plex Manager software automates data optimization. Use version 6.0 and become an instant expert!**

Our automated data review functions optimize usable range and streamline data review by reporting potential areas of concern. You don't need to be an expert to get the best out of multiplex technology.



Identify the state of your data analysis session with dynamic on-screen feedback (this example indicates that all curves in the data file have been automatically optimized).

**NEW!**

Review the optimization report to identify possible problem curves that you may want to review or try to improve manually. Example shows successful optimization with comments.

**>1 Std Removed** — More than one standard was removed in order to increase the usable range of the curve.

**Limited Upper Range** — 2 or more high concentration standards have poor recovery and therefore the upper range of your curve is not usable.

**NEW!**

Visualize unknowns and controls on your standard curve.

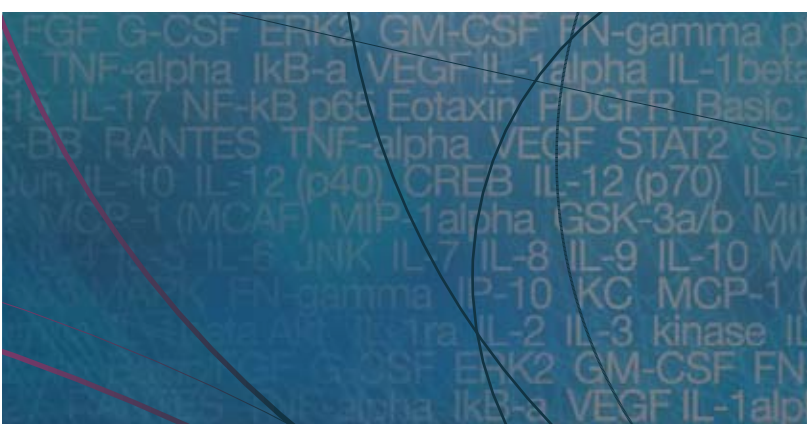
▲, unknowns; ▲, controls.

**NEW!**

Quickly identify usable range of each assay. Recommended Upper Limit of Quantitation and Lower Limit of Quantitation are identified on each graph.

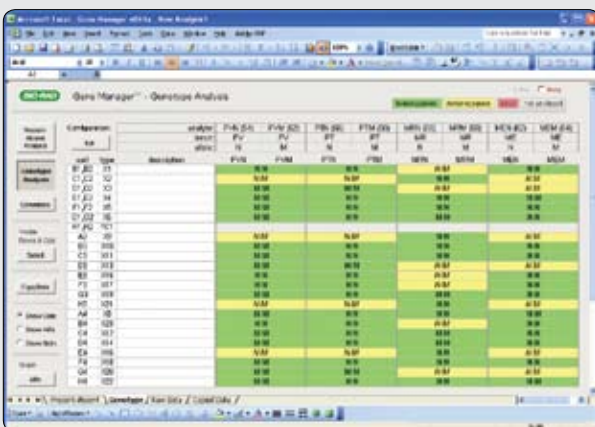
**NEW!**

Be confident in your results — Bio-Plex Manager software uses industry leading Brendan Scientific StatLIA 4 and 5 parameter weighting algorithms to calculate standard regressions, ensuring accurate values for your experimental samples.

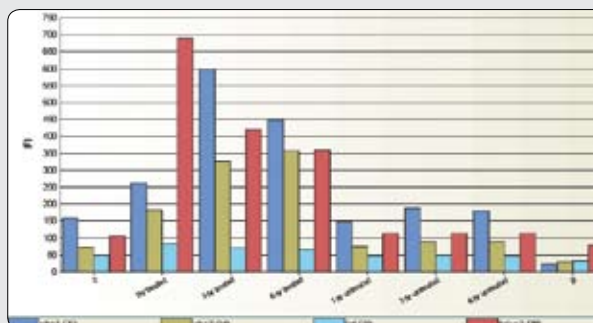


**Bio-Plex Manager software supports multiple applications and provides extensive data analysis options. Experience the complete flexibility of version 6.0.**

An array of application-specific options is available to you when you install Bio-Plex Manager software. Additionally the software provides data acquisition and instrument maintenance capabilities.



Automate<sup>NEW</sup> genotyping calls with integrated Gene Manager analysis macro.



Multiple custom-embedded graphs can be generated and saved with each data file. They update dynamically with changes to the data file. This graph demonstrates a gene expression analysis where two housekeeping genes were used to normalize expression of four genes of interest.

**Data Transfer**

If you are more familiar or comfortable with another program, Bio-Plex Manager software provides you the flexibility to transfer your data to any compatible format.

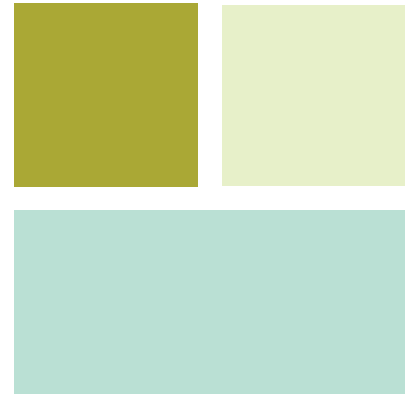
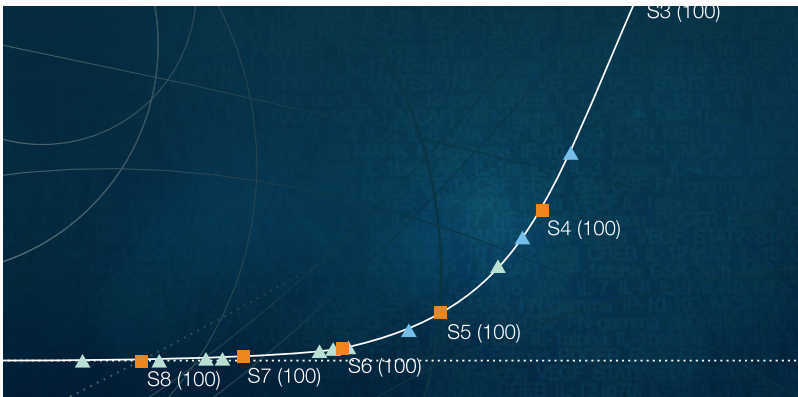
- Customizable export to Excel
- Emulation of IS 2.3 export for analysis with third-party software <sup>NEW</sup>
- LIMS-friendly text files <sup>NEW</sup>
- Style sheets for custom export formats <sup>NEW</sup>
- Pass commands to custom-developed software for advanced users
- Comprehensive XML export

**Customizable Data Presentation and Export**

Thirty-six fields\* are available for export to customized Excel documents. They include

- Four fields that describe samples details
- Five fields for raw data and raw data statistics
- Eight fields for quantitative results and associated statistics
- Ten fields for troubleshooting bead events
- Simple ratio analysis
- Eight fields for normalized data (Gene Expression/Internal Controls) and associated statistics

\*More fields are available for other export options described on the left.



## What's new in this version of Bio-Plex Manager software?

### Data Review and Optimization

- Automatic curve fitting optimizes standard curves for usable range
- Optimization report produced during automated optimization suggests standard curves that should be reviewed
- Enhancements to the standard curve graphs, which now display Unknowns, Controls, and Upper and Lower Limits of Quantitation

### Protocol Setup

- Standard values entry has been simplified
- Standard lot management — Preloaded Bio-Plex® assay lots can be accessed through the Bio-Plex Manager software. New lots will be made available from the Bio-Rad website on a continuing basis
- Multi-assay protocol (sometimes called Multi-batch) allows you to run more than one experiment simultaneously, on one plate
- Import Panel — You can now import a panel from a CSV or text file

### Data Export

- Standard curve graphs are automatically exported to Excel when the Excel export function is chosen
- Enhanced export options, including Output CSV format and the use of style sheets for building custom outputs

### Enhanced Instrument Feedback and Other Time Savers

- Validation prompt — Alerts appear after calibration to inform you how many days have elapsed since your last validation
- Right click Show/Hide function added to the Raw Data Table allows you to customize data presentation
- Ability to analyze during post-run reservoir operations
- Laser time-to-shutdown indicator is now shown in the Instrument Information dialog box
- PCR plate probe needle height adjustment — Use the MCV Plate IV to adjust the probe height for PCR plate use

### Bio-Plex Results Generator

- An additional utility that can be used to import xPONENT data and automatically launch Bio-Plex Manager software for analysis

### Gene Manager

- An integrated Excel-based analysis application designed for genotype (including SNP) and Present vs. Absent analysis

### Regional Support Enhancements

- Identifies and prevents LXR library malfunctions associated with non-English Windows number settings

### Security Edition Enhancements

- Security Edition users can now belong to the BP\_Admin group and one other user group
- Use local groups to manage access to the software

### Bio-Plex Manager Software Versions

Bio-Plex Manager software version 6.0 is an open platform\* that is available in several versions as outlined in the table below. In addition a Security Edition is also available in each of these formats. The Security Edition provides all the tools necessary for meeting 21 CFR Part 11 compliance.

\* Can be used with any xMAP technology assay from Bio-Rad or any other provider.

#### Different versions of Bio-Plex Manager software version 6.0 and their applicability.

	Purpose	Functions			
		Data Acquisition	Instrument Maintenance	Protocol Development	Data Analysis and Export
<b>Instrument Control Version</b>	Instrument operation, data acquisition and analysis	•	•	•	•
<b>Desktop Version (Single User)</b>	Analysis and setup away from instrument	—	—	•	•
<b>Network Version (Multiple Concurrent Users)</b>	Analysis and setup away from instrument (multiple seats)	—	—	•	•
<b>Compatible Systems</b>		Bio-Plex 100 and 200 systems	Bio-Plex 100 and 200 systems	Bio-Plex 100 and 200 systems	Bio-Plex 100, 200, and 3D systems

### Ordering Information

#### Catalog # Description

##### Software

171-STND01	<b>Bio-Plex Manager 6.0 Software</b> , includes 1-user desktop license
171-STND05	<b>Bio-Plex Manager 6.0 Software</b> , includes 5-user network license
171-STND10	<b>Bio-Plex Manager 6.0 Software</b> , includes 10-user network license
171-SCRT00	<b>Bio-Plex Manager 6.0 Instrument Control License, Security Edition</b> , upgrades workstation with Bio-Plex Manager 6.0 software, allows compliance with U.S. FDA 21 CFR Part 11 regulations
171-SCRT01	<b>Bio-Plex Manager 6.0 Software, Security Edition</b> , includes 1-user desktop license, allows compliance with U.S. FDA 21 CFR Part 11 regulations
171-SCRT05	<b>Bio-Plex Manager 6.0 Software, Security Edition</b> , includes 5-user network license, allows compliance with U.S. FDA 21 CFR Part 11 regulations
171-SCRT10	<b>Bio-Plex Manager 6.0 Software, Security Edition</b> , includes 10-user network license, allows compliance with U.S. FDA 21 CFR Part 11 regulations

#### Upgrade Kits

171-STND23	<b>Bio-Plex Manager 6.0 Software for IS 2.3 System</b> , system license, version 6.0, for conversion of Luminex IS systems
171-SUPG30	<b>Bio-Plex Manager 6.0 Standard Software for 3.0 Workstation (Instrument Control) Software</b> , system license for upgrading standard or security software, version 3.0, to standard version 6.0. (Security Edition Upgrade requires 171-SCRT00 to complete upgrade)
171-SUPG40	<b>Bio-Plex Manager 6.0 Software for 4.0 Workstation (Instrument Control) Software</b> , system license for upgrading standard or security software, version 4.0, to standard version 6.0 (Security Edition Upgrade requires 171-SCRT00 to complete upgrade)
171-SUPG41	<b>Bio-Plex Manager 6.0 Software for 4.1 Workstation (Instrument Control) Software</b> , system license for upgrading standard or security software, version 4.1, to standard version 6.0 (Security Edition Upgrade requires 171-SCRT00 to complete upgrade)
171-SUPG50	<b>Bio-Plex Manager 6.0 Software for 5.0 Workstation (Instrument Control) Software</b> , system license for upgrading standard or security software, version 5.0, to standard version 6.0 (Security Edition Upgrade requires 171-SCRT00 to complete upgrade)

Multi-user licenses (25 and 50) are also available for both standard and security editions.

Windows and Excel are trademarks of Microsoft Corporation. Luminex, Luminex 100, xMAP, and xPONENT are trademarks of Luminex Corporation.



**Bio-Rad**  
Laboratories, Inc.

Life Science  
Group

Web site [www.bio-rad.com](http://www.bio-rad.com) USA 800 424 6723 Australia 61 2 9914 2800 Austria 01 877 89 01 Belgium 09 385 55 11 Brazil 55 31 3689 6600 Canada 905 364 3435 China 86 20 8732 2339 Czech Republic 420 241 430 532 Denmark 44 52 10 00 Finland 09 804 22 00 France 01 47 95 69 65 Germany 089 31 884 0 Greece 30 210 777 4396 Hong Kong 852 2789 3300 Hungary 36 1 459 6100 India 91 124 4029300 Israel 03 963 6050 Italy 39 02 216091 Japan 03 6361 7000 Korea 82 2 3473 4460 Mexico 52 555 488 7670 The Netherlands 0318 540666 New Zealand 0508 805 500 Norway 23 38 41 30 Poland 48 22 331 99 99 Portugal 351 21 472 7700 Russia 7 495 721 14 04 Singapore 65 6415 3188 South Africa 27 861 246 723 Spain 34 91 590 5200 Sweden 08 555 12700 Switzerland 061 717 95 55 Taiwan 886 2 2578 7189 United Kingdom 020 8328 2000